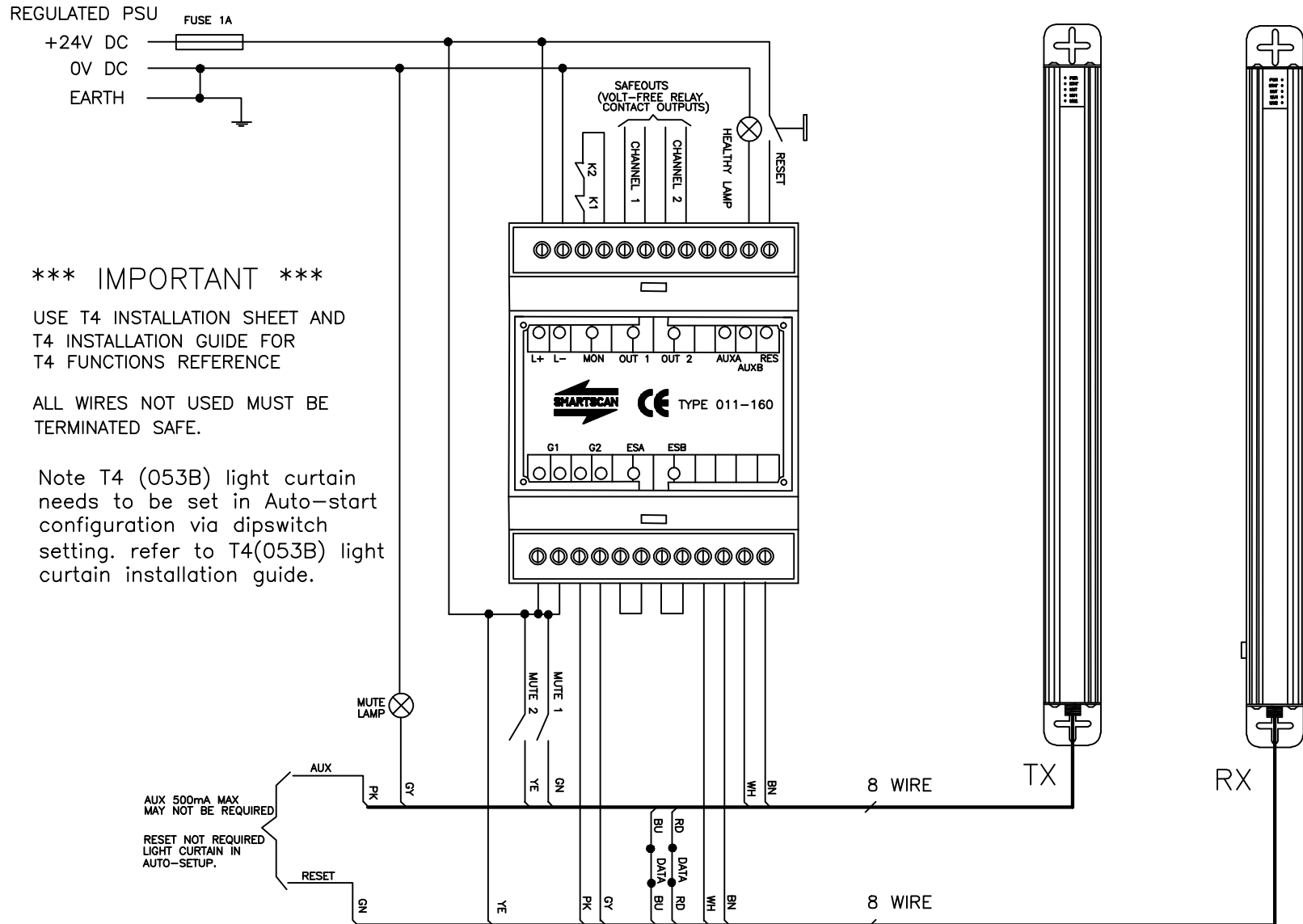


## T4(053BXXX) TO MFU (011-160) 160 WIRING CONFIGURATION



\*\*\* IMPORTANT \*\*\*

USE T4 INSTALLATION SHEET AND T4 INSTALLATION GUIDE FOR T4 FUNCTIONS REFERENCE

ALL WIRES NOT USED MUST BE TERMINATED SAFE.

Note T4 (053B) light curtain needs to be set in Auto-start configuration via dipswitch setting. refer to T4(053B) light curtain installation guide.

AUX 500mA MAX MAY NOT BE REQUIRED

RESET NOT REQUIRED LIGHT CURTAIN IN AUTO-SETUP.